

FIRE SAFETY **WHEN** **CELEBRATING**



Did you know?

- **800 accidental fires in the home are started every year in England from candles**
- **Around 70 fires in homes and buildings in England are started by fireworks every year**

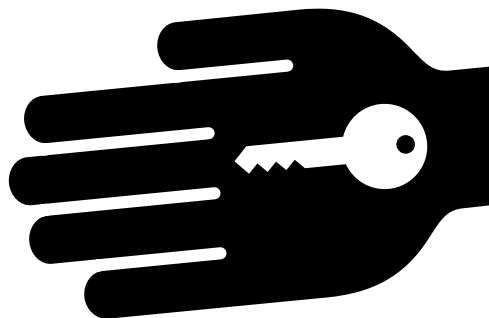
Enjoy celebrations safely by following the simple tips in this leaflet.

Having a party

Inform your guests of the best route to escape just in case.

- Take special care of elderly people, children and those who may find it difficult to get out if there is a fire.
- Put out enough ashtrays, so ash and cigarette butts don't get put in wastepaper bins.
- Tell guests who are staying overnight where the door keys are kept, in case they need to escape.
- Take extra care when drinking alcohol.

Keep door and window keys where everyone can find them



Show guests the escape route

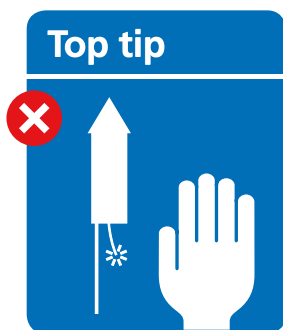


3

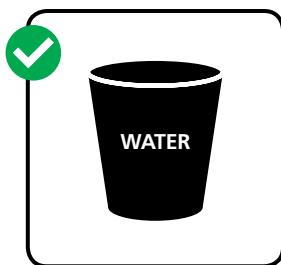
Fireworks

Never go back to a lit firework – even if it hasn't gone off it could still explode.

- Never throw fireworks or put them in your pocket.
- Don't drink alcohol if you're setting off fireworks.
- Store fireworks in a closed box and take them out one at a time.
- Keep a bucket of water nearby.
- Follow the instructions on each firework. Use a torch to read them – never a naked flame.
- Light fireworks at arm's length, using the taper provided.
- Make sure everyone stands well back.
- Always supervise children around fireworks and never give sparklers to a child under five.
- Light sparklers one at a time and wear gloves.
- Keep pets indoors.
- Take care around open flames such as bonfires and barbecues – even clothes labelled 'low flammability' can catch fire.
- Keep bonfires away from things that may catch fire.
- Only buy fireworks marked BS 7114 (the British Standard for the safety of fireworks) or the CE marking (showing they conform to European safety standards).



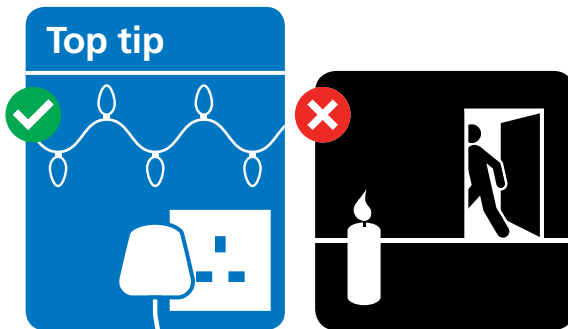
Never go back to a lit firework



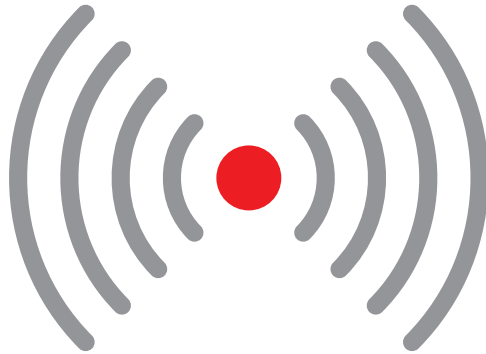
Fairy lights, candles and decorations

Unplug fairy lights when you leave the house or go to bed.

- Keep candles away from things that might catch fire, like Christmas trees, greeting cards, ribbons and other decorations.
- Ensure matches and lighters are returned to a safe place once candles have been lit.
- Put candles out when you leave the room, and make sure they're put out completely at night.
- Check fairy lights are in good working order and replace any bulbs that blow.
- Don't let bulbs touch anything that can burn easily, such as paper or fabrics.
- Make sure the fuse in the plug is the right size (check the box for advice).



**Unplug
fairy lights**



SMOKE ALARMS

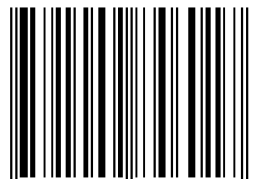
**SAVE
LIVES**

To find out more about fireworks and the law visit
www.gov.uk/fireworks-the-law

For more information on general fire safety visit
www.facebook.com/firekills

FS080 ©Crown Copyright 2015.
Published by Communities and Local Government, March 2015.
Printed on paper comprising no less than 75% post-consumer waste.
Version 3

ISBN 978-1409846017



9 781409 846017