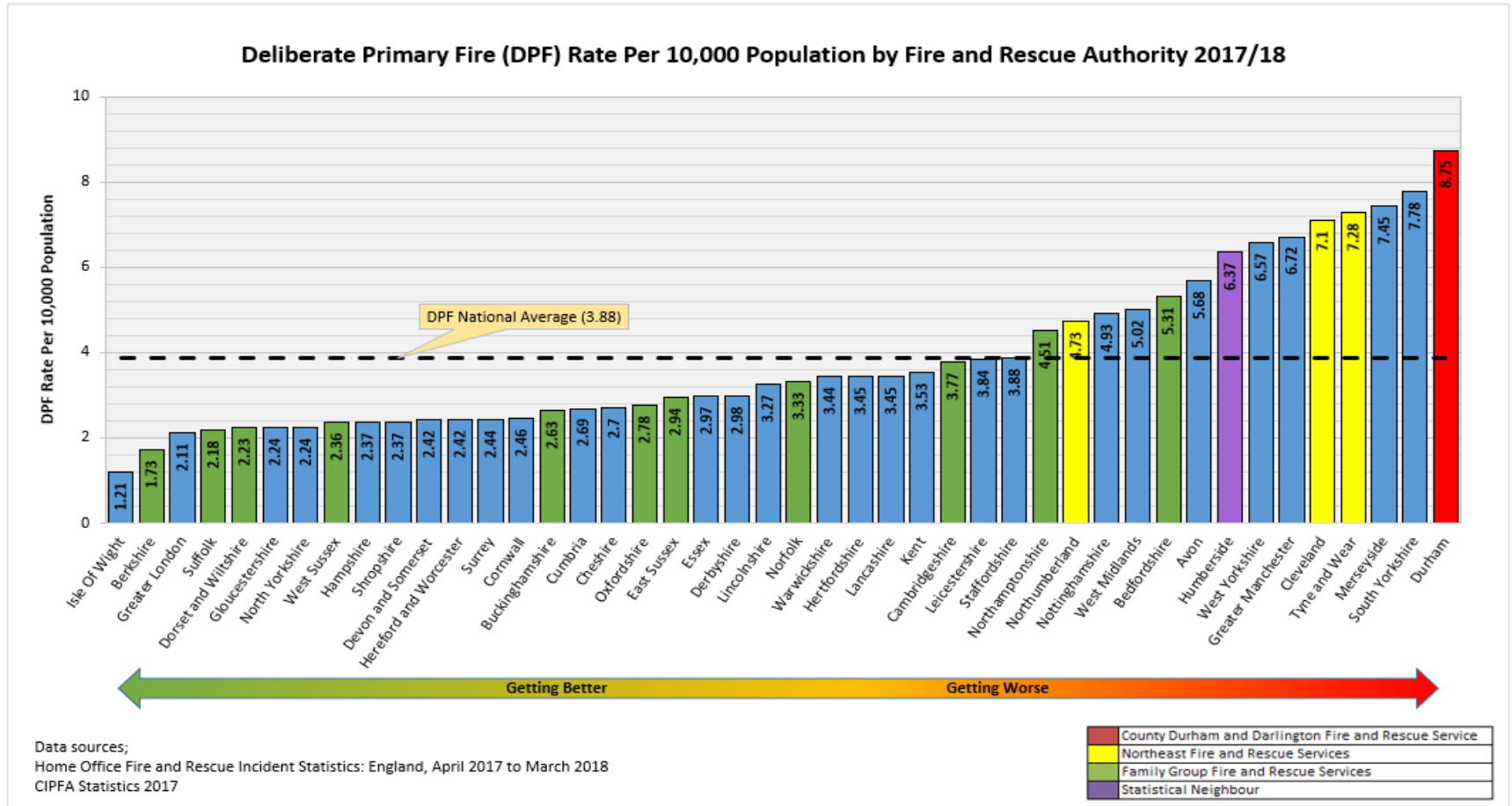


# Deliberate Primary & Secondary Fires

PERFORMANCE COMMITTEE  
2 MARCH 2020



# The current position



# Power BI DPF Loci / type

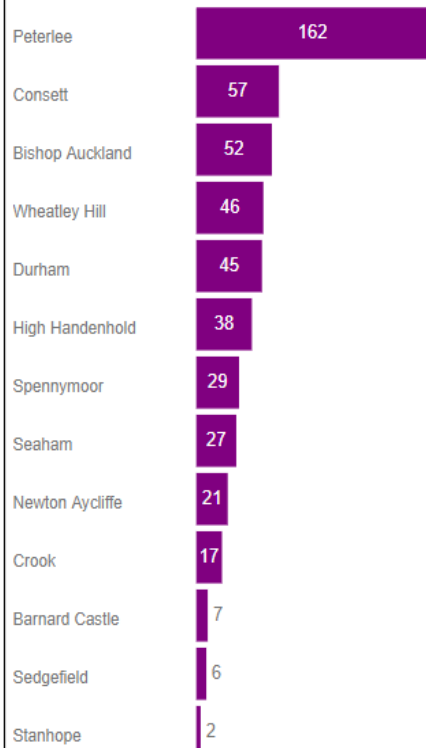
21/05/2019 cross refer to slide 18

Days Since Incident Occurred

All

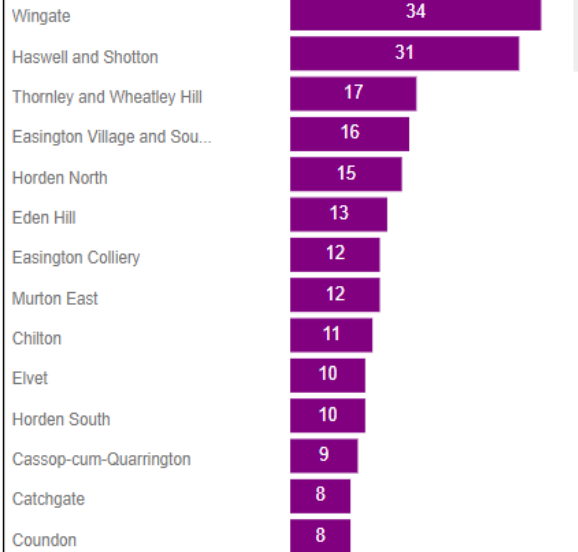
Station Area

Primary Fire



Number of Fires By Ward

Primary Fire

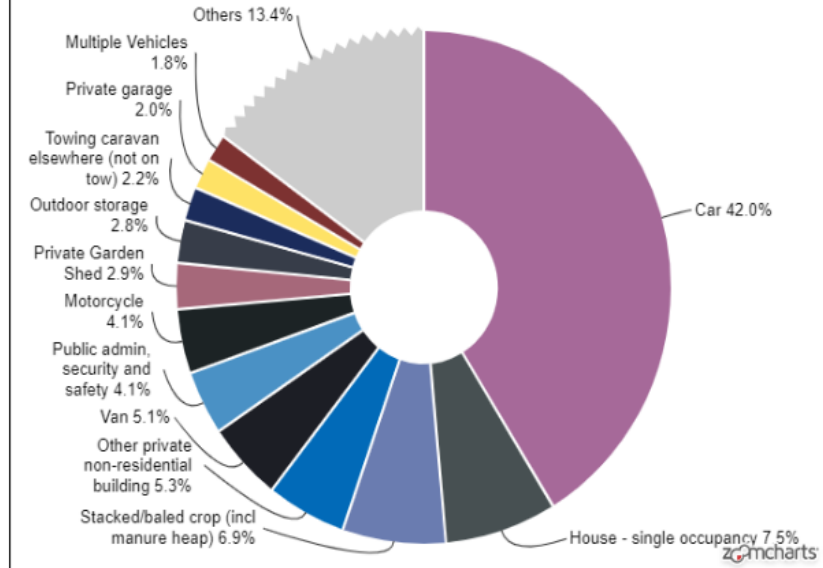


Number of Fires By Reporting Year

Primary Fire

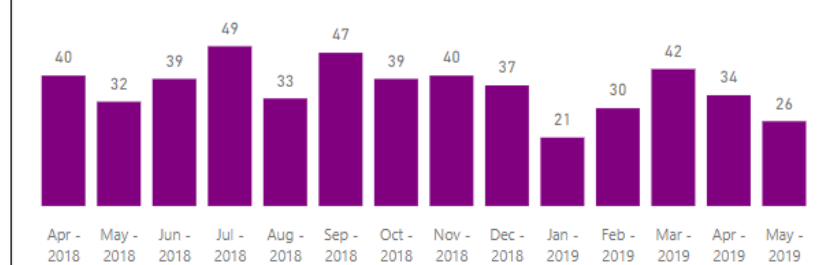


Property Types



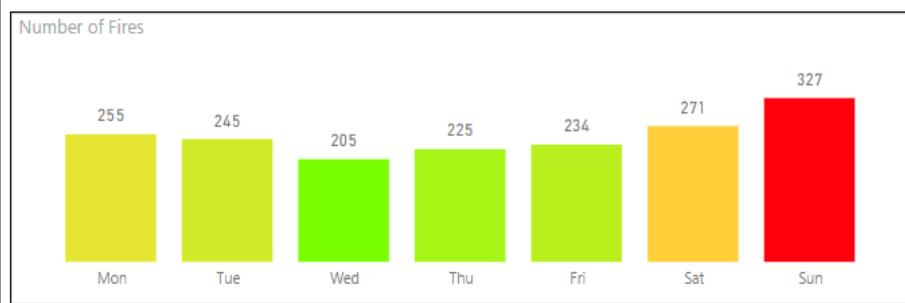
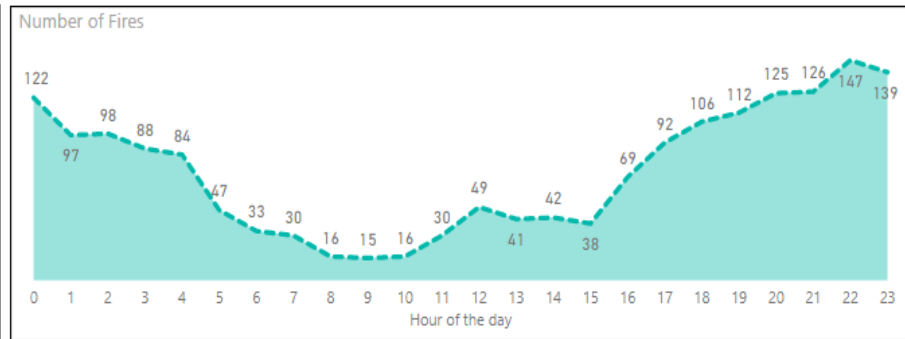
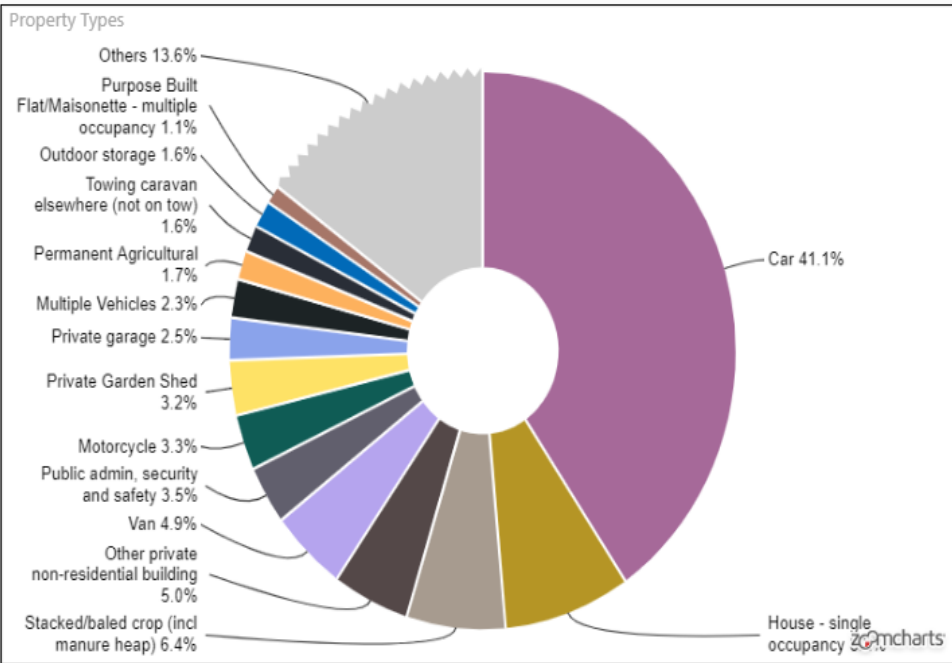
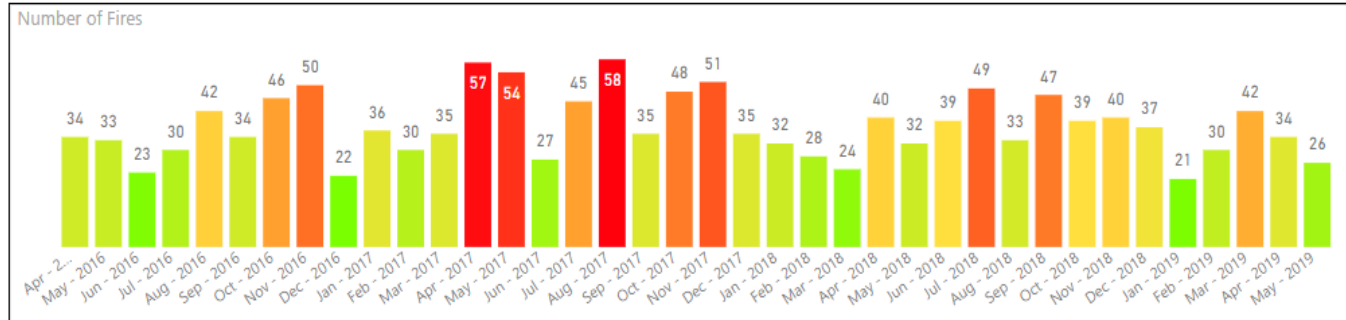
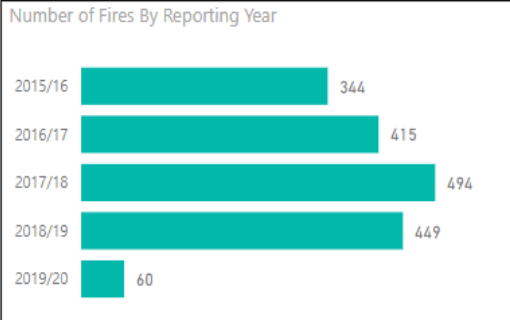
Number of Fires By Month

Primary Fire



# Power BI: DPF analytical picture

(21/05/19) cross refer to slide 19



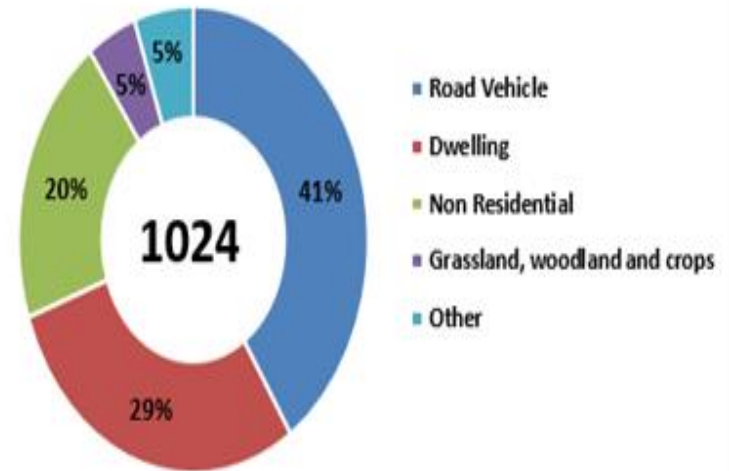
# Growth of DPF

50% rise in DPF in 2018/19 compared to 2007/08.

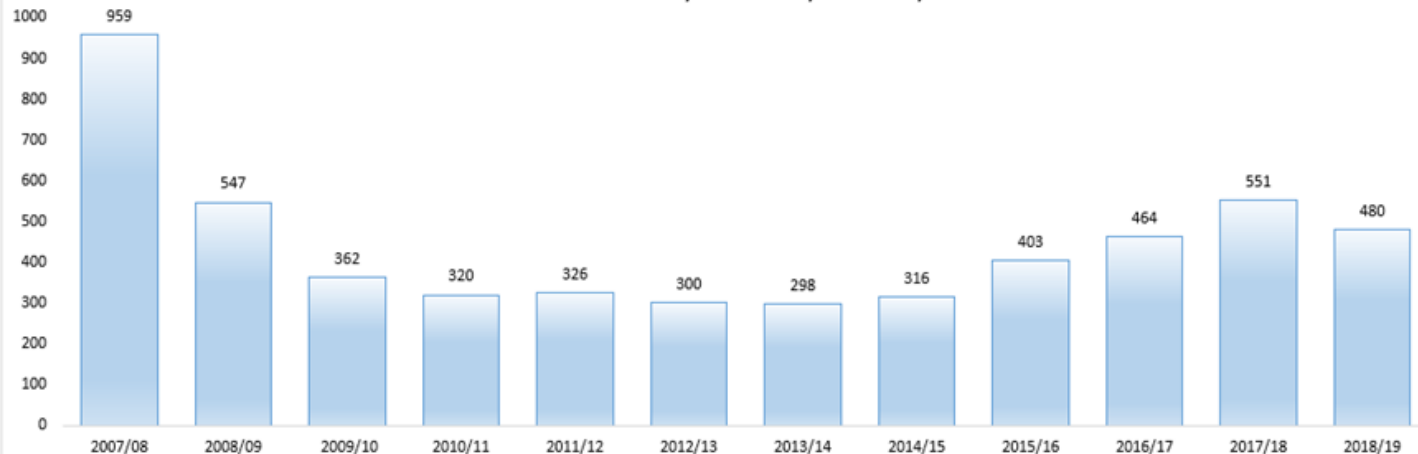
In 2013/14 the DPF rate had reduced to 31% compared to the same period above.

Currently DPF (Vehicles) commands the highest share of the deliberate fire type.

Primary Fires By Type



Deliberate Primary Fires 2007/08 - 2018/19



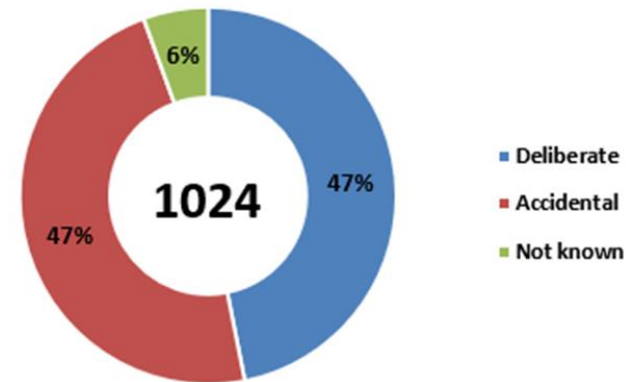
# Primary fires in vehicles

Vehicle fire crimes are particularly endemic in the Shotton Colliery / Peterlee and localised East coastal communities.







Deliberately attacking vehicles by fire appears to be a common modus operandi of choice across the County to escalate disputes and intimidate individuals within criminal associations.



Primary Fires By Motive



# Vehicle fire decision making toolkit

 <p><b>TOTAL BURN OUT</b></p>	<p style="text-align: center;"><b>Total Burn-out</b></p> <p><b>Action:</b> Where the vehicle interior has been consumed by fire and the external plastics are burnt-away and the vehicle bodywork and interior have been reduced to bare metal; <b>do not request Fire Investigation as there is little evidential potential.</b>  <b>Inform Control Room that the vehicle is a 'Total Burn-out'.</b></p> <p><b>The vehicle fire will be investigated by the Fire and Rescue Service at Tier 1, (operational crew).</b></p>	
 <p><b>Significant Fire Damage</b></p>	<p><b>Heat &amp; flame has entered the vehicle interior / engine bay - there is still upholstery &amp; plastics surviving within the interior with some forensic potential.</b></p> <p><b>Observations:</b> Is there a sooty feather-edged stain to the exterior bodywork, windscreen scuttle &amp; wheel arches? There may be a strong smell of petrol in the window beads / scuttle and rain ducts, indicating a deliberate fire.</p> <p><b>Note:</b> Fire debris external to the vehicle must not be placed in the vehicle. Front end attacks tend to be caused by ignition of the number plate / grill by direct heat from a lighter with minimal contact.</p> <p style="text-align: center;"><b>The vehicle fire will be investigated by the Fire and Rescue Service at Tier 1, (operational crew).</b></p>	
 <p><b>Limited Fire Damage</b></p>	<p><b>Some damage to the vehicle's bodywork or interior however, overall the damage is limited.</b></p> <p><b>Action:</b> If the vehicle is suitable for Fire Investigation, then the vehicle may be recovered by the Police Vehicle Recovery Scheme or left in situ if the scene is secure.</p> <p><b>Observations:</b> Is there a sooty feather-edged stain to the exterior bodywork, windscreen scuttle, wheel arches, strong smell of petrol? Look around the immediate area for evidence of a container, BBQ lighter blocks etc.</p> <p><b>Forensic Evidence:</b> A container or cap from a container may be found nearby. Check for local CCTV. Objects used to damage the vehicle / break windows (DNA &amp; Fingerprints).</p> <p style="text-align: center;"><b>This vehicle may be investigated by the Fire and Rescue Service &amp; Police CSI at Tier 2.</b></p>	





# Vehicle fire investigation outcomes

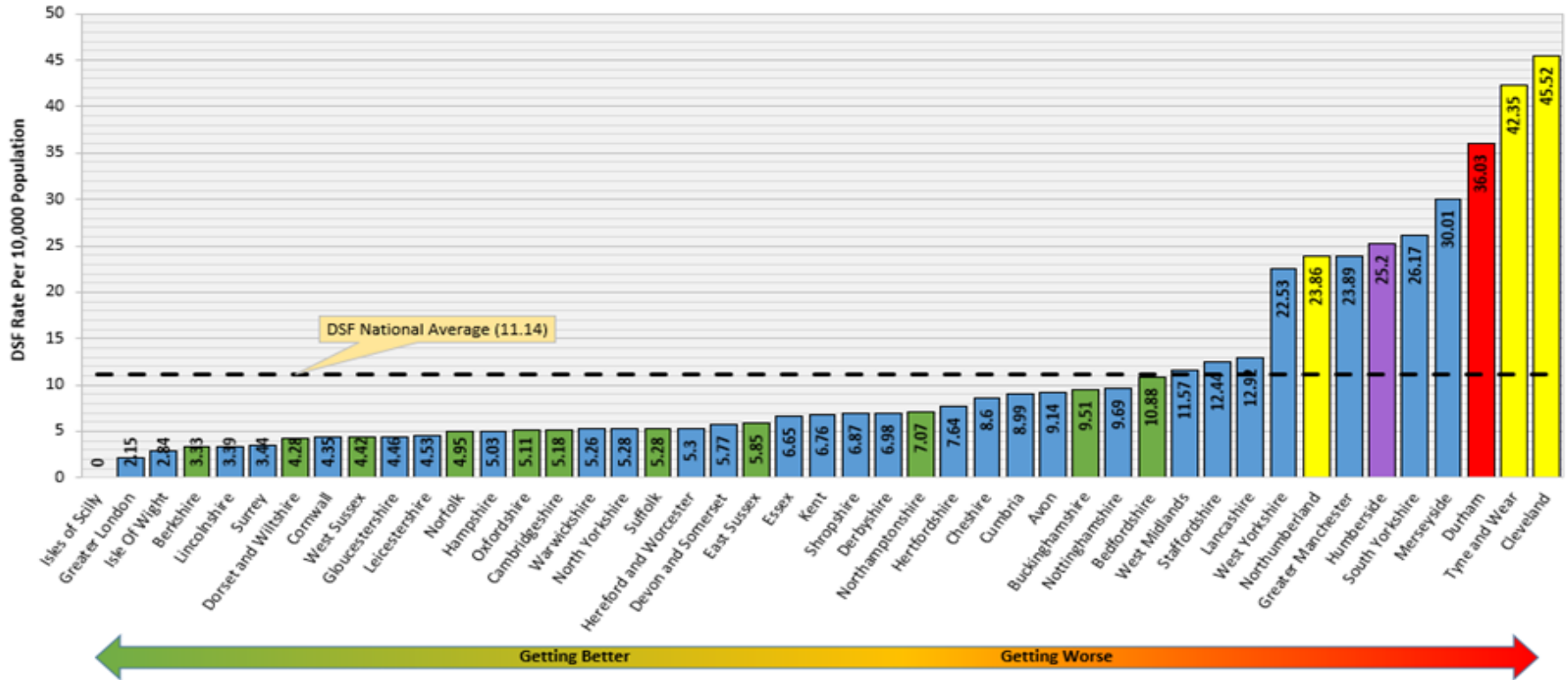
- Tier 2 vehicle examination focused on Green Box - Decision Toolkit with greater opportunity to recover potential evidence.
- Tier 2 vehicles initially assessed by CID. The vehicle may be held longer to facilitate investigation by CID.
- Greater compliance by the Police Vehicle Recovery Scheme to reduce cross contamination.
- Intelligence relating to a Tier 2 fire investigation to be shared with the Arson Reduction Team to develop fire trend analysis.





# Deliberate Secondary Fires

Deliberate Secondary Fire (DSF) Rate Per 10,000 Population by Fire and Rescue Authority 2017/18



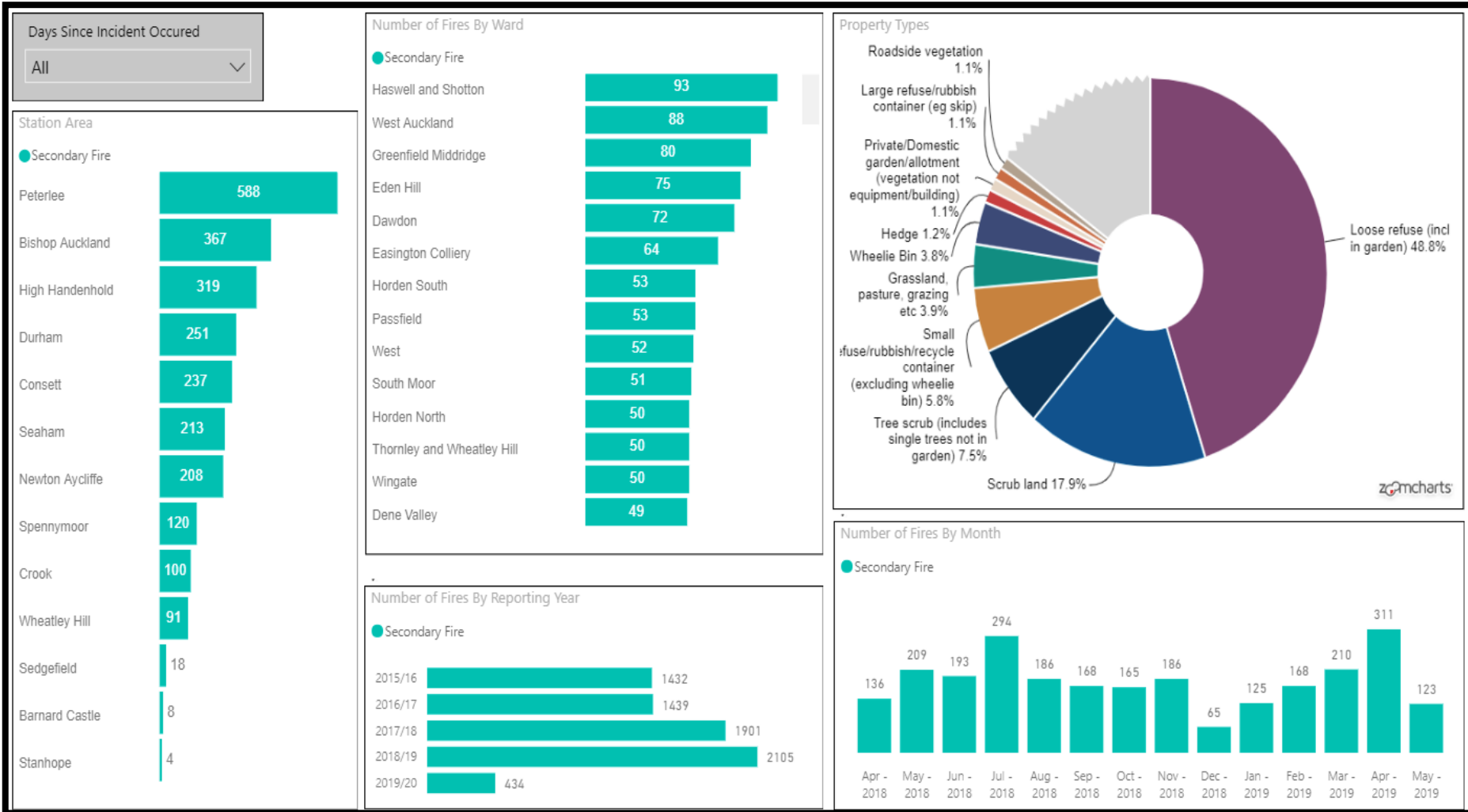
Data sources;  
Home Office Fire and Rescue Incident Statistics: England, April 2017 to March 2018  
CIPFA Statistics 2017

County Durham and Darlington Fire and Rescue Service
Northeast Fire and Rescue Services
Family Group Fire and Rescue Services
Statistical Neighbour



# Power BI DSF Loci / type

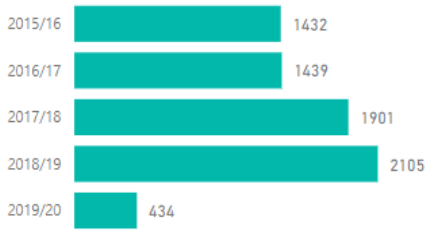
21/05/2019 (cross refer to slide 16)



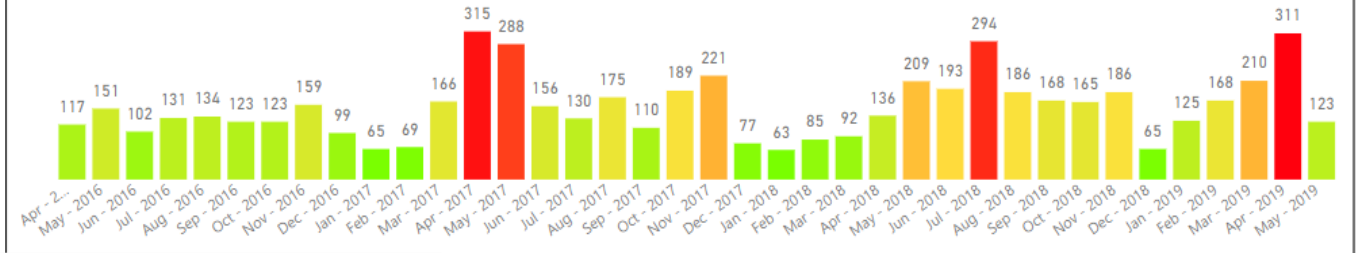
# Power BI DSF analytical picture 21/05/19

Cross refer to slide 17

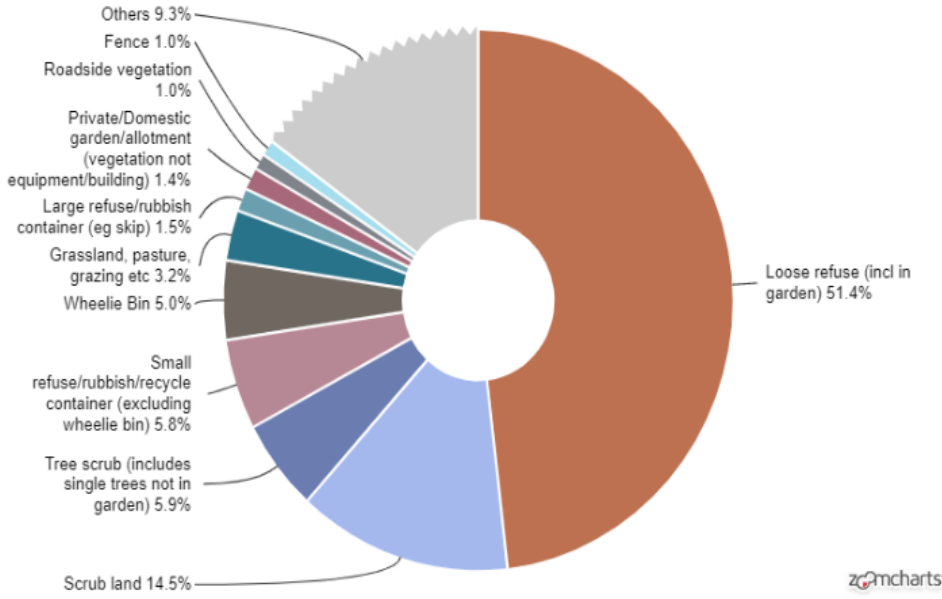
Number of Fires By Reporting Year



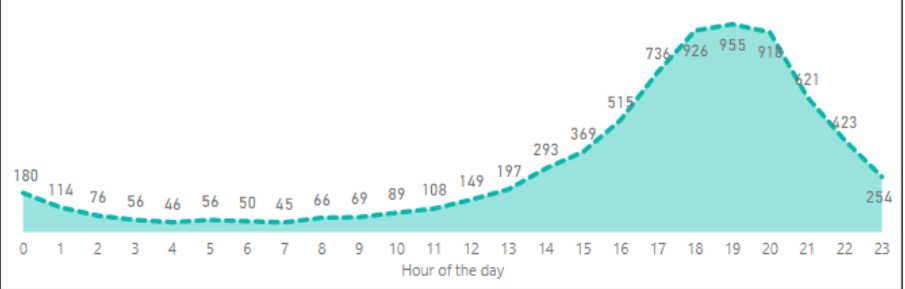
Number of Fires



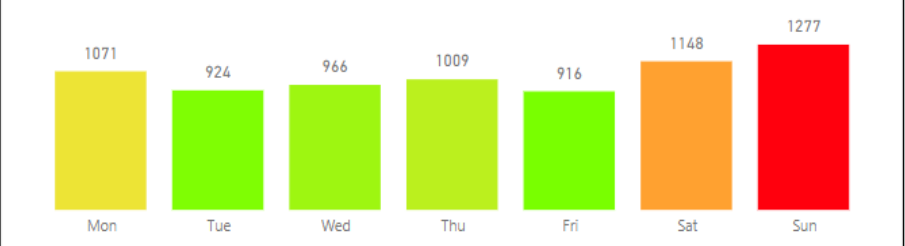
Property Types



Number of Fires



Number of Fires



# Turning the fire trend

- **Fuel Management – greater interaction between CDD FRS, Police, Environmental Services & Community Wardens.**
- **Strategic Arson Seminar, (23/7/19), & follow-up session (13/9/19).**
- **Development of Strategic Education & Arson Reduction project launched 20/5/19.**
- **Phoenix Fire Champions (3 x high risk wards)**
- **Joint Communications project to raise public awareness – waste disposal permits.**
- **Challenge the *Cultural Acceptance* of arson in County Durham.**



# Targeting Young People

- Phoenix Fire Champions scheme sponsored by Believe Housing.
- Head Teachers briefing.
- Phoenix Fire Champions (Seniors)
- College Ambassadors
- ‘Older Peers’ of AR campaigns
- Starts Jan 2020
- Direct support by C&YP Coordinator to schools across DCC & DBC.



- Fire setting interventions with DCC / DBC YOS Teams.
- District briefing / school visit resources.
- Bonfire campaign resources.



# Arson Reduction

- Combined DCC / DBC YOS Team 13+ interventions.
- Formal links with CPSO & Beat teams.
- Formal links with Civic Pride and DCC Green & Clean Teams.
- TLP in DBC 'Back Lanes Project' launched 15th Oct 19.
- Resources & banners to support DM Teams.



- Direct interventions run at Newton Aycliffe & Durham – evidenced reduction based on 'challenge' sessions.
- Direct support to Communities through:
  - Site visits with PCSO & Community Leaders.
  - Articles produced for Community Association websites, FB pages and DBC 'One Darlington' newspaper.





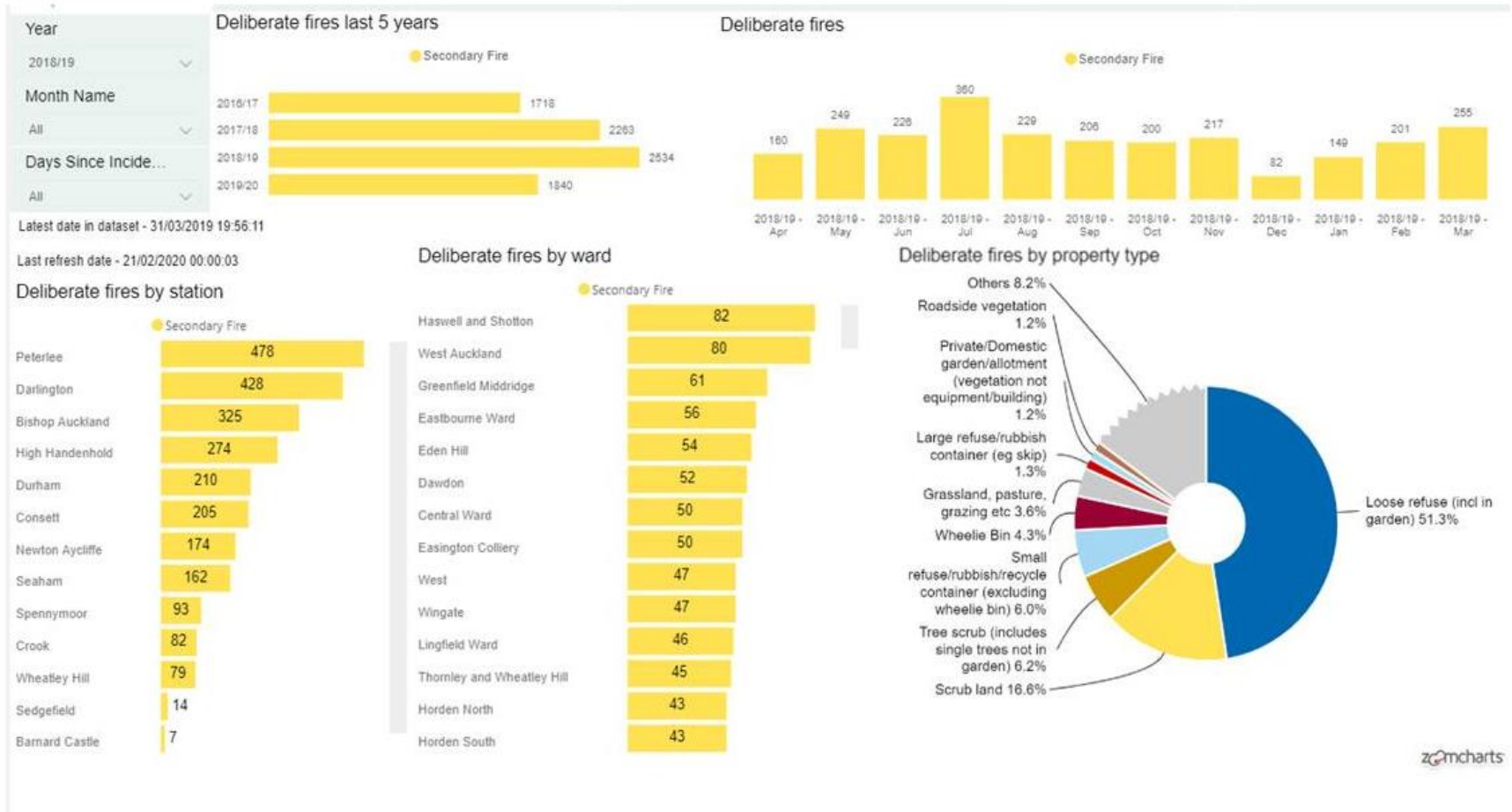
# Arson Reduction

- Arson Reduction Seminar illustrated the true arson trend in CDD / DBC.
- Development of a statistical review of key wards in DCC & DBC.
- Development of detailed AR stats in collaboration with Information Services Team.
- Back Lanes Project in DBC PCSO / Beat Teams.
- FISS Woodie used to consolidate
- Fire Stoppers project
- Community Empowerment.
- Instigates social reform & change.
- Not a referral scheme.
- A 'long haul' approach.



# Power BI DSF Loci / type

21/02/2020 (cross refer to slide 10)



zcmcharts



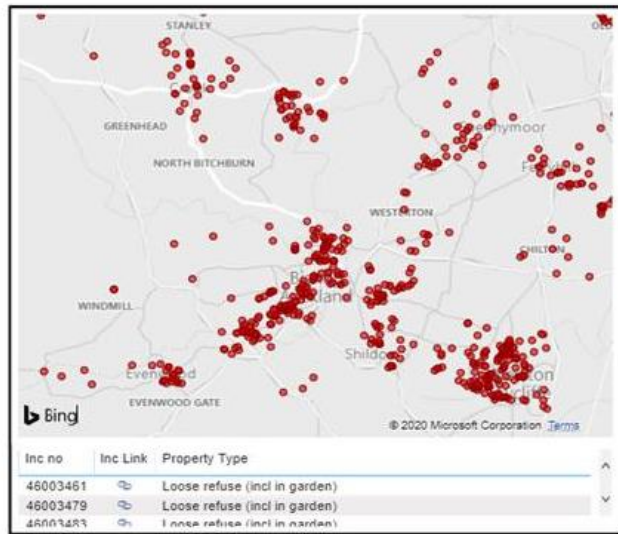
# Power BI DSF analytical picture 21/05/19

Cross refer to slide 11

## Secondary Fires – Analysis Data April 2018 – March 2019



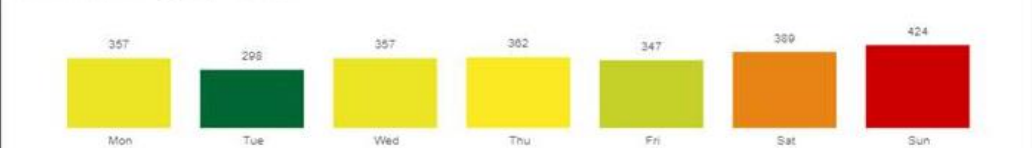
### Deliberate fires by month and calendar year



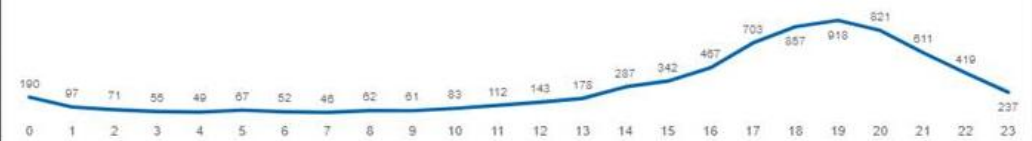
### Deliberate fires by day of month



### Deliberate fires by day of week



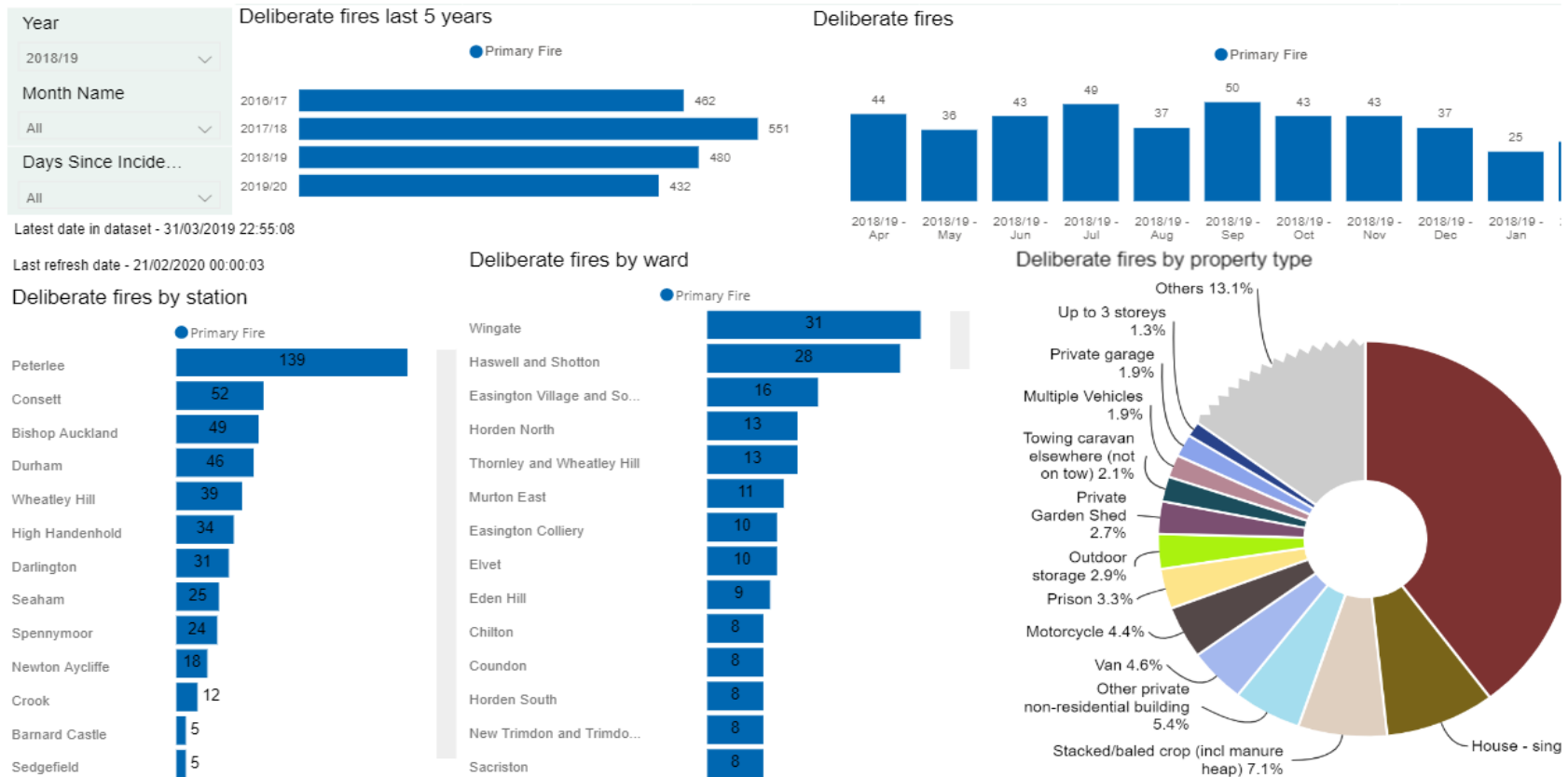
### Deliberate fires by hour of the day



# Power BI DPF Loci / type

21/05/2019 cross refer to slide 3

## Primary Fires April 2018 – March 2019



# Power BI DPF Loci / type

21/05/2019 cross refer to slide 4

Primary Analysis Data  
April 2018- March 2019

